

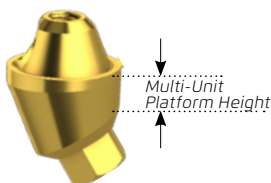
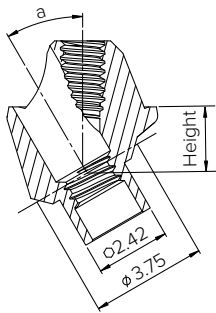
SCREW RETAINED RESTORATIONS |

ANGLED MULTI-UNIT



DESIGN FEATURES	<ul style="list-style-type: none"> • Wide range of angled multi-unit abutments: 17°, 30°, 45°, 52° and 60° • Wide range of gingival cuff height • Gold color anodization for soft tissue adaptation
CLINICAL BENEFITS	<ul style="list-style-type: none"> • Screw retained abutments • Made for angled implants placement • For angled implant placement • Non-removable restorations
MATERIAL	Titanium Alloy (Ti-6Al-4V ELI)

ORDERING INFORMATION



Angled Multi-Units				
Multi-Unit Platform Height (mm)				
Angle°	2	3	4	5
17°	 NM-A7112	 NM-A7113	 NM-A7114	 NM-A7115
30°	 NM-A7133	 NM-A7134	 NM-A7135	 NM-A7136
45°	 NM-A7144	 NM-A7145	 NM-A7146	 NM-A7147
52°	 NM-A7152	Included with all multi-unit bases		
60°	 NM-A7160	 NM-S7101	 Abutment Carry-on handle NM-X7101	